

# HOME RESORTS

## LIGHTING THE ULTIMATE IN PRIVATE RETREATS.

As the world's wealthy become more numerous and the world shrinks, the phenomenal growth of 'home-resorts' is evident worldwide. Even for those fortunate enough to be able to afford the best of everything, one thing becomes harder to achieve as time passes – a luxurious lifestyle in personal privacy. Overcrowded cruise liners, once-secluded resorts overrun by budget tourists – as the world's taste for exotic adventure and travel spreads to the masses, privacy is at a premium.

Charter yachts and 7-star hotels may offer the finest of accommodations, personal service and locations, but they are still temporary and expensive abodes. What the wealthy are doing in response is creating their own havens of luxury. In effect – home-resorts!

Not to be confused with resort homes, which have been around for centuries, the modern home-resort – enabled by the wonders of modern technology, driven by the forces of wealth and the desire for luxury in seclusion – is a different development indeed.

Encompassing clusters of main buildings, landscaped grounds featuring pools and waterfalls, with infinity pools and spas, terraces with spectacular views, luxurious indoor and outdoor entertainment areas, home cinemas and AV rooms, custom kitchens, and master – suite bedrooms and bathrooms – home resorts are becoming a symbol of achievement.

Owners of home – resorts include wealthy singles, families and



even corporations. The focus may be on lavish entertaining, with palatial entertainment rooms for parties and business or family gatherings, or family nesting with plentiful children's and teen activities to encourage them to entertain friends at home. Luxurious bedrooms and baths for owners and guests, entertainment choices including home cinema, exercise gym, spa, swimming pool and tennis courts – as well as a complete home-office with computers, office equipment and global communications 24/7 – are all standard in a home-resort.

Exotic gardens and outside entertainment areas – terraces, grottoes, walks & paths, swimming pools and ponds – are typical settings for home-resorts, with interior and exterior spaces flowing together in places.

Home-resorts usually rely on automation to control the numerous systems required to support and service a property of this size and complexity, with intelligent lighting controls in the vanguard of specified systems. And as with all home-automation, convenient and intuitive ease of operation is important for owners and their guests.



Home-resorts by definition have numerous rooms and levels with many entrances and outdoor areas. With homes of this nature, and many owners too busy to supervise the final lighting layout during design and construction, it is often impossible to ascertain just how an area will be used until it is occupied. Flexible software-based lighting control systems with multi-point/multi-channel switching – and the ability to operate with all types of standard and specialized lamps – allow lighting ‘scenes’ and operations to be finalized at commissioning stage, and easily reprogrammed at any time thereafter to suit a customer’s wishes.

And of course, system failure would be unthinkable in such a property, so 24-hour/365-day operational reliability, elimination of single-point-of-failure, ease of maintenance and superb product support are of overriding importance for any lighting control system installed.

### LIGHTING HOME-RESORTS – THE SMART WAY!

Home-resorts vary as widely as their owners and locations – yet certain common characteristics define these magnificent residences.



There will inevitably be lavish entertainment areas, replete with sumptuous or expensively minimalist decoration, furniture and the latest in AV equipment. Spacious and comfortable bedroom suites with privately controlled environments, high-tech gymnasium and spa facilities, and extravagant outdoor pool and leisure facilities in landscaped grounds are all taken as said.

All of these areas have different functions, and require different lighting and lighting controls. An intelligent lighting control system, correctly specified, installed and maintained, provides the level of convenience and control expected throughout the property with programmable control of all exterior and interior lighting.

The recommended solution for lighting luxury home-resorts is installation of complete-building switching and/or dimming systems to control lights



in the major buildings in the cluster, networked together with a centralized monitoring and control system. With stand-alone systems provided for each area, single-point-of-failure vulnerability is minimized. This effectively creates a whole-home system for controlling lights in all main buildings, augmented by smaller dimmers in guest bungalows and suites.

Exterior, security and landscape lighting are best installed as stand-alone scene dimming and/or switching systems networked to a centralized master controller.

### LIGHTING HOME RESORTS - ROOM BY ROOM

Lighting control systems provide convenience and simplicity of operation by replacing conventional fixed wired layouts with a flexible software based system adaptable to the owner’s current and future requirements.

A basic switch layout concept for home-resorts could include:

- a master panel by the front entrance for owners to select ‘welcome’ scenes or turn on security lights
- a centralized switchpanel in a hallway opposite the main Living Hall
- a switchpanel inside the Living Hall with remote control option and temporary settings for entertaining
- a dual-zone switchpanel in the kitchen area to control inside & outside area lighting
- an (optional) master switchpanel in Master Bedroom so lights can be dimmed or turned off from one location before going to bed, leaving pre-programmed lights on as required.

Larger home-resorts can expand on these concepts with additional switchpanels located throughout the property and linked to the control system, and/or with a central PC or touch-screen controller programmed for whole-property coverage.

## LIVING HALL

A multipurpose living hall – frequently opening out to incorporate an exterior terrace, swimming pool or gardens – is usually the core of a home-resort. This will typically be spacious and lofty, often with multiple levels and niches, where the owner can entertain business associates or guests can party and dance. AV systems, large screens, entertainment systems, water features and aquariums, as well as wet bars and buffet/serving stations, and of course plentiful and comfortable lounges and sofas, can all be expected in the Living Hall.

Intelligent lighting controls for this focal area must feature true ‘scene’ dimming, as against simple ON/OFF or manual faders. Light levels can be dimmed for more intimate occasions or in certain zones, with other areas ablaze with pre-programmed room lighting to enhance the party mood.

Architectural interior lighting can be expected in the Living Hall using concealed fluorescent lamps, low voltage lamps, cold cathode neon, and wall washers, uplighters and downlighters and others. Futronix lighting controllers and ancillary systems can provide complete control over all of these, allowing lighting scenes to be programmed for any mood or requirement, with dynamic or subtly fading transitions between scenes.



A Futronix **PFX System** is the recommended solution for such a large and complex space, networked with the other dimming and switching racks installed throughout the property to allow centralized control.

The architecture and decoration of the Living Hall are frequently highlighted with controlled fluorescent dimming for ceiling coffers or under cabinets and counters, or interior and exterior architectural and atmospheric lighting using extremely subtle color lighting washes. Other systems can trigger opening and closing of sunshades and drapes, or other events, according to detected ambient light.



## FAMILY ROOM

Even if the house is full of guests, the wealthy have families too, so normally the private quarters will be removed somewhat from the Living Hall and other ‘entertaining’ areas. With a ‘scene’ dimmer controlling lighting in the family room, light levels can be dimmed for watching a movie on television, or raised a little for viewing sports programs or children’s cartoons. A convenient remote handset allows users to easily raise light levels for a moment to read DVD titles or adjust equipment settings. Reading, entertaining personal friends, or hosting an intimate family gathering can all require different settings for various room lights.

Lighting for the family room could be controlled by a PFX scene dimmer, networked as part of a whole-house lighting control system, with local switchplates for selecting room lighting scenes.

## DINING ROOMS & AREAS



Home-resorts will typically have several dining areas – main dining room, breakfast terrace, snack bar, sun lounge or conservatory, al fresco terrace, garden pavilion, garden barbecue, poolside, owner's private dining room – and more. Areas adjacent to an open kitchen, bar or terrace may be divided into zones for dining, relaxation or entertainment – with different types of lamps and levels for each zone.

Depending on location, lighting controls for dining areas may be part of a larger scene dimming system such as installed PFX systems, or stand-alone dimmers in exterior locations.

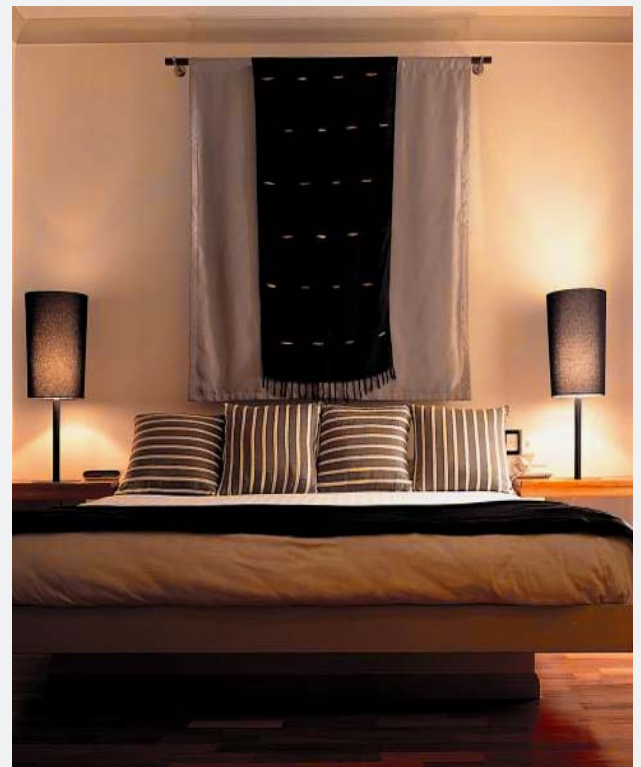
## MASTER BEDROOM & OTHER BEDROOMS

Master bedrooms for home-resorts will normally comprise a suite of rooms, including one or more bedrooms, his-&-hers bathrooms and WCs, walk-in closets and dressing rooms, and often a private study or lounge. Large screen TVs and personal AV system are usual, and can be operated as part of the lighting control system if desired. For master suites, individual lighting scenes allow for setting 'scenes' for TV viewing, reading, sleeping, romance and even lighting a path to the bathroom.

Doors or full-height windows opening to a patio and/or private pool or jacuzzi are typical, with lighting controls incorporated with master suite control systems. Al fresco table lighting, garden lighting – even in-pool lighting – can be controlled as part of the master suite system, as can motorized sunshades, curtains or blinds.

Again, a networked stand-alone PFX System dimmer is perfect for this application, although another option is installation of smaller stand-alone **Hx** or **P-Series** dimmers. The master bedroom – where the owner's day begins and ends – is also a logical place for a **master switchpanel**, so that every light in the house can be dimmed or turned off with a single touch from one switchpanel before going to bed, leaving pre-programmed security lights switched on.

**OTHER BEDROOMS** – such as guest or children's bedrooms – can also be linked into Futronix whole-house systems, providing night-lighting, morning wake-up lighting, and other features. Alternatively, smaller stand-alone P-Series or Hx dimmer units can provide similar features.

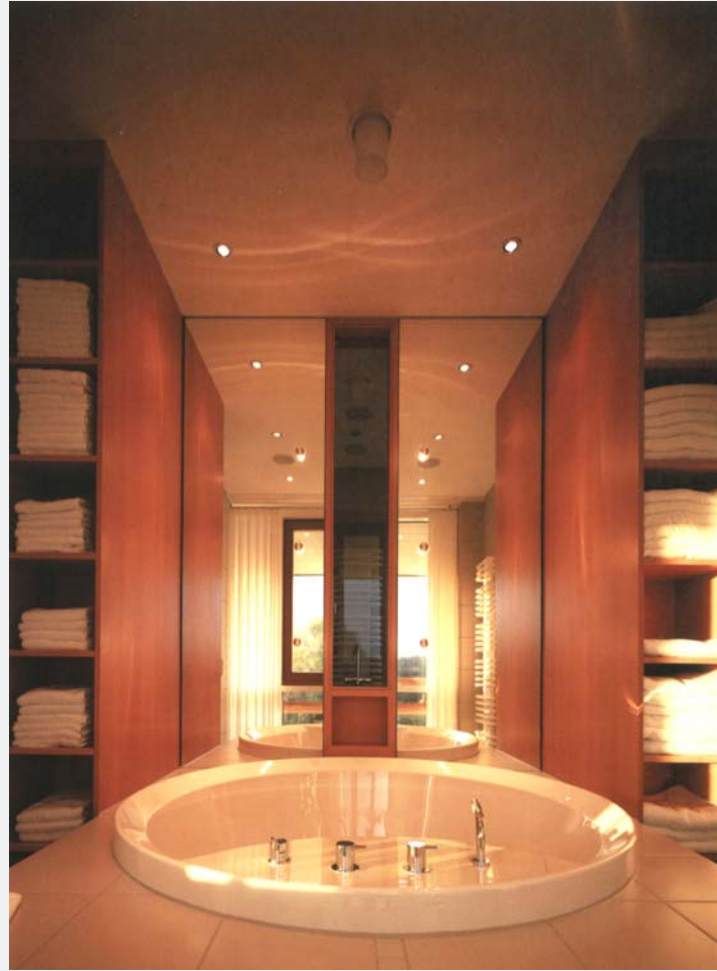


## MASTER BATHROOM

A master-suite bathroom should be a place of retreat and relaxation for a busy owner. Dimmed lights are beneficial for a relaxing bath – and for peace of mind in a wet area, the ideal lighting control is an extra low voltage switchplate linked to a PFX.

With no live mains power behind the unit to short if water splashes onto the switchplate, the owner can brighten or dim lights over the vanity, illuminate wall sconces, and dim overall bathroom lighting from a nearby switchpanel without danger. Polished stainless switchplates are recommended for bathrooms for ease of maintenance.

Futronix systems can also control mirror demisters, blinds and window shades and music systems so with a single touch of a switchpanel, the ideal scene can be set to fade gently in. Soothing lights and music, reduced sun glare, switchable heated towel rails, temperature controls – even water-safe flat screen TVs – can all be controlled by touching a single button on a Futronix switchpanel.



## OTHERS BATHROOMS

Lighting in other bathrooms throughout the main and outlying buildings in a home-resort can also be programmed into a Futronix-based whole-house lighting control system to provide similar features for all occupants.

## GUEST BUNGALOWS

There will usually be bedrooms within the main buildings for family and close friends, but for casual or business guests, free-standing bungalows set in the grounds some distance from the main house can ensure space and privacy for all. Natural, subtly atmospheric lighting is desirable for these guest suites, with individual lighting controls operating all lights in each bungalow.

Ideal lighting controllers for guest bungalows include the Hx remotely-mounted wireless dimmer, or P-Series stand-alone dimmers. With these dimmers, different zones and areas such as bedroom, bathroom, lounge/dining area, can be controlled by a single dimmer unit. These can be completely stand-alone units, or can be networked to a central control location for master switching, while still providing total individual control over bungalow lighting.



## HOME CINEMAS

Home-resorts will usually feature a dedicated home-cinema – frequently a miniaturized version of a commercial cinema with curtains, tiered theater seating, wall sconce lighting and soffited overheads with concealed lighting. Multi-scene lighting is usual, programmed for pre-show and after-show fade-in/fade-out transitions combined with music, all controlled by Futronix systems with integrated control from a single universal remote handset.

Viewing movies can be stressful rather than relaxing if a home cinema is too dark. Just as commercial cinemas create the ideal film-

watching environment by adjusting and dimming lights, dimming home cinema room lights increases image contrast and improves detail, clarity and color.

Other lighting commonly installed in home cinemas includes compact fluorescent concealed overhead lights, wall uplighters and downlighters, LED lighting for seat/row location, and even stage lighting. In addition to all installed lighting systems, versatile Futronix dimming systems can control motorized screen curtains, screen lifts, window shades and AV systems to effortlessly recreate the authentic experience of 'going to a movie'.

The **Home-Icon**<sup>®</sup> TouchScreen Controller can provide all these features when integrated into a whole-house lighting control system, or a P-Series dimmer can provide control for a stand-alone home cinema lighting system.

## KITCHENS & SNACK BARS

Home-resorts normally have superb kitchen equipment and appliances installed in spacious kitchens, replete with work islands, AV systems, flat screen TVs and computers used for recipes and internet. Home-resorts often have more than one kitchen, with kitchenettes at poolside or in guest bungalows, and frequently extensive outdoor barbecue, range and servery setups for outdoor entertainment for large numbers of guests.

Lighting for kitchens can be programmed as part of a central multi-room dimmer system, or with a stand-alone scene dimmer covering just the kitchen and perhaps an adjacent snack bar area. Lighting will typically feature fluorescent lighting above countertops, with halogen or low voltage lighting over kitchen or dining table area providing atmospheric lighting for family or intimate dining. A single-room dimmer can control task lighting for areas requiring bright lighting at sinks, work areas and appliances, with dimmable lighting in snack-bar or dining areas.

Lighting controllers can control all these kitchen lighting fixtures, as well as any installed AV and TV sets, and shades and blinds.

Beside the kitchen door is also an ideal location for a dual-zone switchpanel providing convenient one-point control of both interior and exterior lighting.





## DEN / STUDY / LIBRARY

The den or study is a room where daily stress is laid aside for a while, and personal pursuits come to the fore. Such a retreat may feature hi-fi, TV or plasma screens, reclining easy chairs, mini-bars and libraries.

Dimmed overhead lights and a few soft table lamps can create a soothing ambiance for listening to music, or a brighter scene is conducive to reading the latest news or finishing paperwork.

A P-Series dimmer is ideal for lighting these rooms, or control can be integrated into a whole-house system with the Home-Icon TFT Color TouchScreen controller.



## EXTERIOR & LANDSCAPE LIGHTING FOR HOME-RESORTS

Home-resort owners and designers will also want – at least some of the time – to create dramatic architectural lighting effects for the exterior.

‘Scene’ dimming for exterior lighting can be provided by a home-resort’s exterior lighting control system. With a PFX system installed, subtle variations of ambiance can be programmed with auto-sequencing to highlight specific exterior features or areas.

A home-resort’s security, exterior, and landscape lighting will include mixed dimming & relay switching of non-dim types.

For non-dim lighting, Futronix relay switching panels offer robust and accurate control. Relay switching units used for exterior lighting should also control water features such as pumps and fountains, as well as any non-dim garden lighting, front gate and perimeter lighting.



## MAKING A HOME-RESORT DAZZLE WITH AUTOMATED LANDSCAPE LIGHTING

Home-resort owners can make their gardens and water features dazzle with automated lighting to enhance the beauty of nighttime surroundings by creating depth in the landscape.

Landscape lighting should blend with other exterior lighting to enhance the owner’s enjoyment of the gardens and home at night – and to increase safety and security.

Many equipment options are available for landscape lighting – the most common is ‘bullet’ type uplighters and downlights for illuminating trees and shrubbery, grazing walls with light to enhance texture and form, and highlighting selected features. Other options include in-water lights for pools and ponds, in-ground lights for flush-mounted accent lighting, and floodlights for widespread wall washing.

As with all lighting installations, careful planning is important. Typically, illumination will highlight trees, walkways, pools, flowerbeds and gazebos or pavilions. For pools and water features, reflected light from waterfalls and fountains creates dancing sparkles on rocks, plants and patios.

Other areas requiring exterior lighting include swimming pools, spas and hot tubs, gazebos and pavilions, tennis courts and even boat docks.

However, lighting should also be planned to deter trespassers and enhance safety. Walkway lights can highlight the path to the main door, especially if a home-resort has many doorways. Outdoor stairways can also be illuminated for safety.



## LIGHT SELECTION FOR LANDSCAPES

Different types of lights meet different needs – selecting the correct light for the purpose is the first step.

Trees are best lit with **'bullet' lights** – an uplit tree provides an interesting focal point for visually separating areas of a large property. Watertight color lenses provide daylight-visible color accents for gardens and pools.

**Floodlights** are used to light home exteriors for security, and to illuminate areas of foliage too large for 'bullets'. Appearance is a consideration due to the size of units, so attractive unit design is important.

**Walkway lights** are ideal for paths, also for flowerbeds and for adding decorative accents during the daytime. Again, appearance is important as these lights usually remain visible – many units are designed as decorative features. Coverage diameter should ensure complete light coverage for selected areas.

**Deck lights** are small area lights designed for concealing on decks and patios. They should be mounted low to avoid glare, though some designs

will shine both up and down. These are also effective mounted inside stone or terracotta garden lanterns, or in bamboo-pole luminaire/uplighters.

**Underwater lights** provide general illumination for ponds or pools, while spots can be effective for lighting water features, with different colors for different seasons. Floating lights are available with a weighted base.

**In-ground lights** are used to up-light shrubbery and trees, and should be almost invisible in daytime. These are more 'permanent' than other low-voltage outdoor lights, so careful planning is important. An adjustable baffle on the lens helps minimize glare. In-ground lights are available as spotlights or floodlights.

Attractive landscape lighting is best achieved with a variety of lights, but all should be of durable materials – lots of copper & brass, and thick metals that won't corrode in a few years. As for installation, the goal is to make the entire system as invisible as possible, especially the wiring.

Decks, terraces and patios are frequently not used at night because badly placed lights dazzle the eyes and attract unwanted insects. In these areas, landscape light fixtures rather than deck lights are preferred. Mounted on posts or railings at waist level or lower, these provide ambient light without glare



or drawing in bugs. Where possible, wiring should be concealed inside posts and under decks.

Deck lights with 'scene' dimming provide great flexibility in setting moods for outdoor living and entertaining. Even tree lights can be dimmed depending on season – in summer trees with more foliage need more light.

## ADDING AUTOMATION TO LANDSCAPE LIGHTING

Automation is easily achieved for landscape lighting. Scene dimming – using **PFX** dimming systems – enhances the beauty and versatility of gardens and grounds, while motion detectors reduce energy costs for terrace lighting, and provide an additional level of security.

For entertaining, aesthetically pleasing landscape lighting can transition through subtle or dynamic effects, but when the guests depart bright security lights fade up.

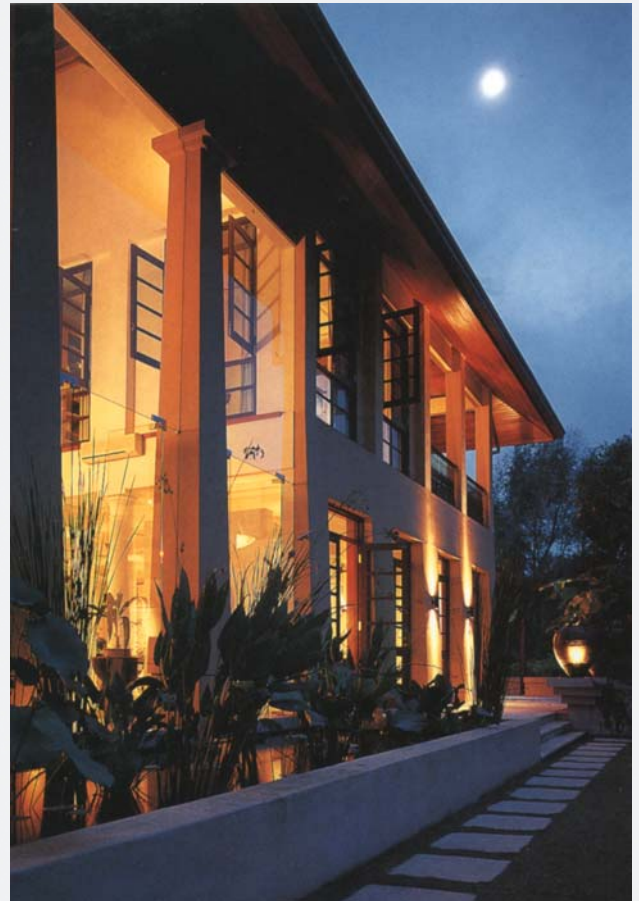
For landscape and exterior lighting, dimmers with in-built astronomical timers are highly recommended. With a standard clock function timer or PC, owners must adjust manually for seasonal daylight saving changes. With an in-built astronomical timer, the clock knows when the sun is scheduled to come up or go down every day, based on latitude & longitude, and lights can be programmed to follow this clock.

With 'scene dimming' lighting controls, owners can create different landscape lighting scenes and zones for different times of day and varying 'moods.' These can be relatively complex scenes, and they can transition slowly or dynamically for variety. With intelligent lighting controls, difficult situations can be eliminated – for example, when a 'garden party' scene is selected, all lawn sprinklers will switch off, and so forth.

For Jacuzzis, spa tubs and swimming pools, controlled lighting can create extremely subtle color gradations - continually varying imperceptibly - as lighting washes for walls, pool lighting and other features, and even underwater lights. Or for late-night bathers, a detector can trigger a discreet trail of light along the path to the pool.

An intelligent outdoor lighting control system can also interface with AV equipment, spas, fountains, pool pumps, sprinklers, gazebo lighting, PA and other systems.

Whether owners want to add security, show off plantings, spotlight fall colors or eliminate shadowy areas, landscape lighting coordinated with home automation adds beauty, safety and value to home-resorts.



## MATCHING NEEDS & SYSTEMS FOR PERFECT HOME — RESORT LIGHTING

Futronix' range of all-digital lighting controllers' includes systems ideally suited to the many and various requirements of luxury home-resorts. Intelligent lighting control systems provide centralized control of unlimited-channel lighting throughout a home-resort, and Futronix ancillary systems and accessories are designed to customize selected channels to allow specialized features for specific purposes and areas.

For such large and complex homes, the flagship **PFX System** is typically the core lighting controller system specified to provide 'scene' dimming for the main buildings, and frequently for exterior lighting as well. Related systems are designed for switching heavy-duty interior and exterior lighting, and controlling large-scale curtains, blinds and sunscreens in window-walled lounges and entertainment areas.

Other dimmer systems, such as the innovative wireless Hx scene dimmer and the P-Series residential dimmers provide most of the same features for lighting smaller multi-room or single-room spaces.

Various ancillary systems and accessories provide a multitude of compatible options, extending the reach of these Futronix systems to virtually every aspect of lighting control. The complete range of intelligent lighting control systems manufactured by Futronix includes compatible, networkable solutions for any and all challenges involved in lighting luxury home-resorts.



## FUTRONIX SWITCHPLATES – THE STYLISH FACE OF FUTRONIX



Home-resort owners or guests can control the lighting for individual rooms or areas with the supplied remote handset or from conveniently located Futronix switchplates, many featuring an IR display window to receive commands and display status.

Futronix switchpanels are available with functionality ranging from simple 3-button panels up to 8-button panels, all providing an appropriate level of complexity. With simple 'one-touch' commands for most functions, users do not need to search through complex menu trees to operate simple functions – a real benefit for owners, guests and even the cleaners.

Additionally, to maintain uniform style throughout the property, all Futronix single-room dimmers and PFX switch-panel outstations are visually designed to complement each other in a range of styles and finishes, so networked and stand-alone dimmers can be installed in the same home-resort. And if room décor is changed, switchplates are available in standard Futronix finishes, or custom switchplates can be ordered to complement the new décor.

The elegant new range of ultra-thin Futronix Eclipse wall-mounted screwless switch panels feature a display with IR receiver, are individually addressable and have programmable group functions.

Master switchplates, capable of controlling lights in every room – a handy feature in large home-resorts to avoid turning off lights manually before leaving home or going to bed.



Stylish, robust, timeless – Futronix switchpanels combine multiplex functionality with simple elegance in minimalist designs. Striking yet unobtrusive, all switchplates are available in brushed or polished stainless steel, polished brass and white metal.

## SELECTING THE IDEAL LIGHTING CONTROL SYSTEMS FOR HOME-RESORTS

Home-resort lighting control systems fall into two main categories – whole-house and single-room systems.

### Whole-house lighting control systems

A whole-house lighting control system based on the Futronix **PFX** System commands lights throughout a home, including outdoor entertaining and garden areas, and security lighting.



### PFX intelligent lighting controllers

Built around a range of standard modules, PFX systems are flexible and powerful enough to control lighting for an entire resort-home, and multiple units can be linked to create systems of unlimited size. In conjunction with the in-built timer, these systems can also create the realistic impression that a property is occupied even during extended vacations.

The PFX System is simply the most advanced professional dimming system available for sizable luxury houses. For the ultimate in user convenience, the quiet and reliable PFX manages lighting usage with energy efficiency and increased functionality.

An unlimited channel lighting control and whole-building automation system, the PFX System is a modular system of linked dimmer racks and switch panels installed throughout a home-resort. The Futronix PFX features true '**scene dimming**' in all rooms or areas, and a comprehensive list of features and options unrivalled by competing systems. A range of accessories adds functionality in specific areas.

The PFX can provide multiple functions, with up to 20 lighting 'scenes' per room, hundreds' of 'extra' scenes, and macros to run pre-set lighting 'environments'. Operational flexibility, security, and ease of operation via touch-screen user interface are beneficial features of the PFX System.



With 'scene dimming' area lighting can be effortlessly transformed for ambient or mood lighting, architectural illumination, guest room lighting variations, and lighting public areas such as lobbies, corridors and balconies. Most types of lighting can be controlled by the standard PFX System, including continuous tungsten, low voltage, halogen, neon/cold cathode, and fluorescent (high frequency).

A comprehensive range of accessories and options further enhances the capability of Futronix dimmers. The PFX's in-built 24/7 timer can schedule selected scenes for atmosphere, special events, or security. Multiple functions and macros to run pre-set environments are available when a Home-Icon controller is connected to the PFX System, and the Home-Icon's 365-day astronomical timer can program lighting and automation events up to one year in advance.

All system operations can be performed centrally from a linked PC and/or Futronix Home-Icon HI-C Color TouchScreen controller, or from a remote control handset or wall-mounted switch panels. Separate PFX Systems - one or more per floor – are linked to a color touch screen in the central control room.

Parties, business functions, dinners and celebrations are frequent activities in most home-resorts, and these also have special lighting requirements. For example, movement detectors are useful accessories in dining rooms to conserve energy when rooms are set up, then left empty for long periods before an event begins.

The PFX System's **X-Bus**® protocol allows all power and data to be sent down a single multi-stranded cable, daisy-chained to each control switch plate in turn. This useful feature for lighting control – especially for large pillarless areas such as Living Halls – requires significantly less cabling and installation, and provides greater reliability due to fewer components and connections, easier terminations and more robust cable.

Even for complex installations, Futronix PFX Systems are easy to specify and commission, with simple wiring and space requirements.



## HX WIRED/WIRELESS REMOTE-LOCATION DIMMERS

An extremely flexible solution for lighting guest rooms or bungalows– or other outlying rooms in a home-resort – is the innovative Futronix Hx Controller, installed either free-standing or networked to the centralized control location or BMS (Building Management System).

The Hx Controller is a powerful remotely mounted dimmer with 8 channels of dimming and switching, 4 channels of 1-10V dimming, 24/7 timer, hard switching inputs from a normal light switch, occupancy inputs, and wall switchplates featuring a display with IR receiver. The versatile Hx dimmer is available in both wired and wireless versions.



Designed for mounting in the overhead ceiling cavity or other electrical void, the Hx unit will connect to other equipment including switchpanels, PC or touch screen controller. Modular design allows for networking multiple units and provides for multi-point switching control as well as one-touch lighting control via the supplied remote handset.

Particularly relevant for home-resort guest bungalows is the Hx unit's versatility. As well as room lighting of all types, the Hx can be programmed to control most automated devices, including curtains, drapes, as well as mirror demisters and energy-saving non-dimming CF Compact FL lamps for bathrooms. And guests always appreciate the simplicity and convenience of centralized one-touch control of lighting in the bungalow's several rooms.

Guest bungalow/suites usually comprise a single large area divided into zones for dining, relaxation and entertainment, and adjacent kitchen/ breakfast bar. Each zone requires different types and levels of lighting – and possibly other system automation as well. With the Hx Dimmer the inconvenience of getting up to alter lights and other systems from inconveniently located manual switchpoints is virtually eliminated.

The unique Hx dimmer's multi-point, multi channel switching, sophisticated lighting control and networking options are typically available only with much larger centralized dimming systems. And like PFX and Envirosceen dimmers, Hx dimmers can connect directly to Home-Icon Color TouchScreen Controllers for user-friendly control via an intuitive graphical interface.

## SINGLE-ROOM LIGHTING CONTROL SYSTEMS

Designed to arrange the lights in just one room or suite of rooms, single-room systems can add visual appeal to one special area in the house – perhaps a home theater, a family room or an elegant sitting room – or control lighting in a bedroom, kitchen or bathroom. Futronix Hx and P-Series digital dimmers provide superb dimming control for single – rooms or single-area/multi-room installations.



## P-SERIES RESIDENTIAL DIMMERS

For family and guest bedrooms in main buildings, or guest bungalows, another option for stand-alone dimmers is one of the P-Series dimmers. These units are also useful for single-area lighting controls for kitchens, games rooms, spa/saunas or conservatories.

These dimmer units have all control and dimming functions built into the one module, plus an integral timer; they offer 20 programmable scene settings, and provide multi-zone localized control with multi-point switching with the same ease and flexibility as PFX Systems installed in a home-resort's main buildings.

Designed with in-built **X-Bus**® protocol, P-Series dimmers can connect to switch-panel outstations, providing multi-zone/multi-room control and making them the most versatile stand-alone digital scene dimmers available. P-Series dimmer units can also dim fluorescent tubes – perfect for bathrooms, or for kitchenettes in a free-standing bungalow. And guests always appreciate the convenience of being able to select lighting scenes from the comfort of their chair or bed using the remote control handset.



## HOME — ICON COLOR TOUCHSCREEN CONTROLLER FOR HOME-RESORTS

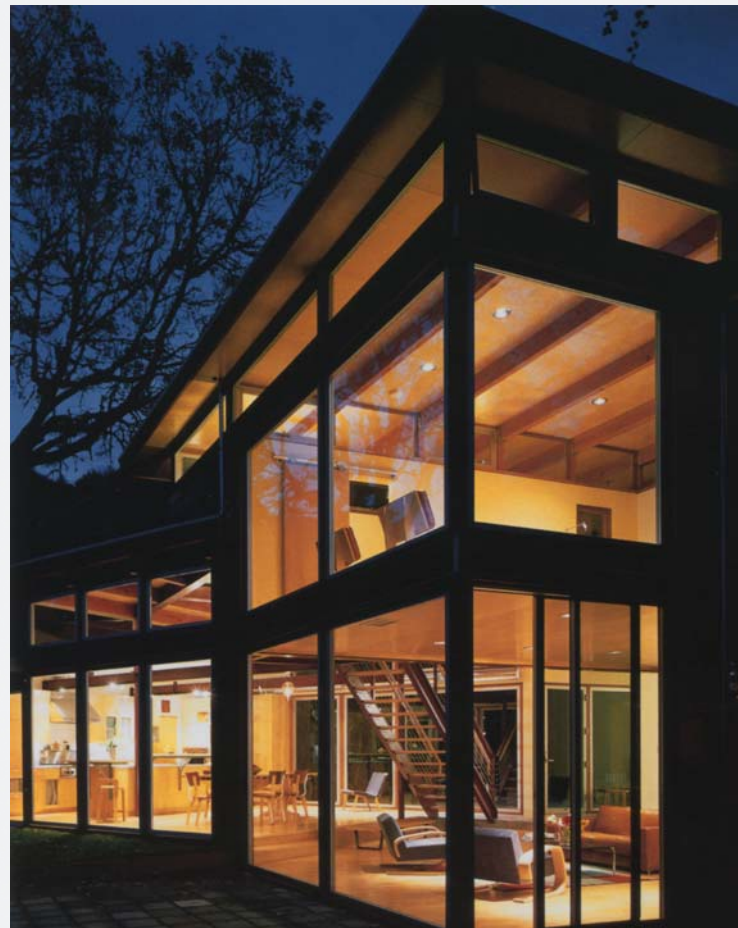
A well-planned lighting control system for a luxury home-resort may well incorporate multiple dimmers of different types. The ideal solution to providing system-wide remote control and monitoring of PFX and Hx dimmers and other automation systems is linking all installed systems to a Futronix **Home-Icon** TouchScreen Controller.



The Home-Icon system's powerful central processor integrates and controls lighting systems in any size building, operating as master controller for Futronix dimmers, switch panels and accessories. Home-Icon provides effortless mastery of multiple functions, with one-touch macros to run pre-set 'environments' for lighting and for whole-house ambient control.

For luxury homes such as home-resorts, other equipment can be controlled by the Home-Icon including curtains, blinds, motorized projection screens, home cinema equipment – even AV equipment, security alarms – to provide whole house master control. Although Home-Icon integrates readily with controls for these switching/relay-based systems, unlike other systems, users still retain control to adjust levels, scenes, and functions at any time.

A Home-Icon controller also provides the home-resort owner with master automation control for the entire property, with an in-built 365-day astronomical timer to program lighting for special events and holidays far in advance.



The Home-Icon controller can re-program lighting scenes, raise and lower lighting circuit levels and save system changes. Master control of the property is simplified with the full color TFT touch-screen.

For large home-resort installations, the touch screen display is usually located in the main entrance hall, the owner's office or in a separate control/distribution room. With all features set-up from the color Touch-Screen interface, Home-icon combines ease of operation with flexibility, and can be fully web enabled with its own web site pages and dynamic data display.

### **MANAGEMENT, CONTROL & SECURITY WITH AUTOMATED LIGHTING**

Futronix dimming and switching units are typically installed out of sight in an electrical control room with equipment, wiring and accessories arranged for easy cabling, installation, programming, inspection and maintenance.

The home-resort owner (or manager) can program and monitor all operations from a centrally-located PC or Home-Icon TouchScreen controller in his office, or from a remote handset or laptop computer.

Futronix lighting controls monitored from a central location also enhance owner and guest security - a major concern for luxury properties - with entrance and occupancy detection, security and perimeter lighting subject to automated commands, and emergency lighting linked to installed security systems.

And as all Futronix systems are fully compatible both backwards & forwards, an investment in a dimming system always retains its value, while maintenance, service and spare parts always remain available.



### **PROFESSIONAL ADVICE ESSENTIAL FOR THE AUTOMATED HOME-RESORT**

There is virtually no limit to the investment you can make in a 'smart' home-resort. With intelligent lighting control systems - whether operated as a separate system or linked to a whole-house automation control system - the ultimate success of the installation hinges on professional specification, installation and commissioning.

Home automation systems must be intuitive enough to enable even casual guests to operate systems on a basic level. If done the right way the whole system should recede into the background to the extent that it becomes unnoticeable.

## **Simplify complex lighting systems for luxury home-resorts . . .**

## **. . . with intelligent lighting control systems from Futronix!**

For large home-resorts, *not* having an automated lighting control system means endlessly switching lights on and off or adjusting dimmers, AV equipment, pond and fountain pumps, and closing and opening curtains or blinds.

With a properly specified intelligent lighting control system professionally installed and programmed, visible clutter is minimized, and operation is comprehensive and effortless.

What home automation and intelligent lighting control really does for a homeowner is enhance control over the home environment, provide more choices in lifestyle and leave more time free for business or leisure.

Wherever a luxury home-resort is located, with appropriate intelligent lighting control systems installed, owners can enjoy the benefits of subtle or dazzling lighting and ambiance, combined with operational simplicity and reliability.

[www.futronix.com](http://www.futronix.com)